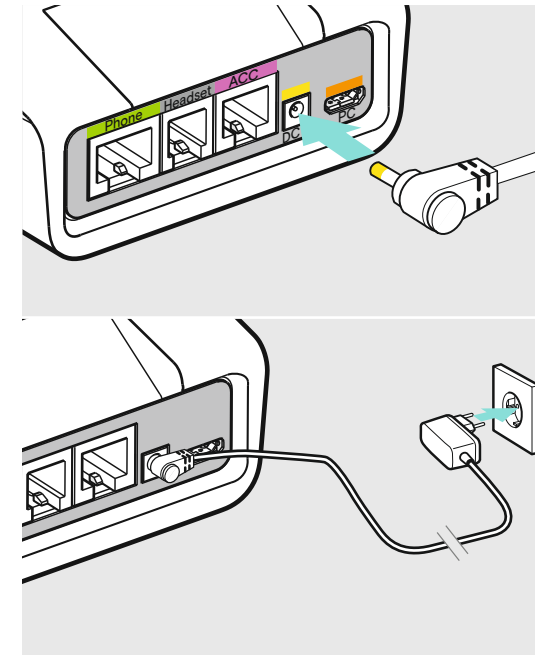
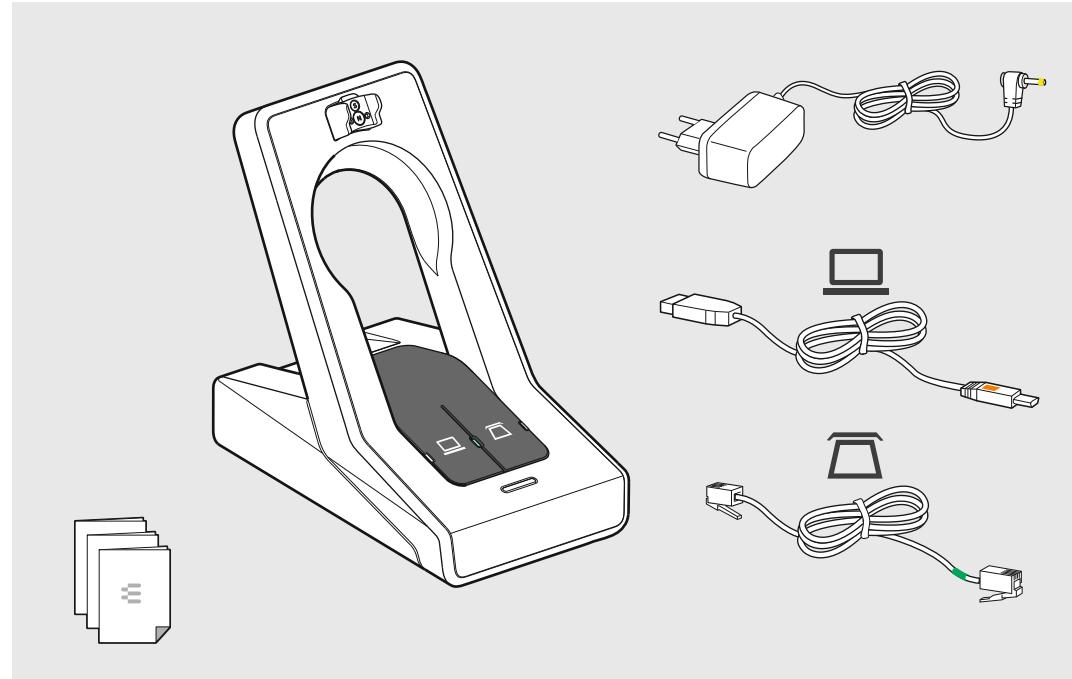


IMPACT SD Series Basestation

EN Quick Guide ES Guía rápida
FR Guide express PT Guia Rápido

Model: SCDB13

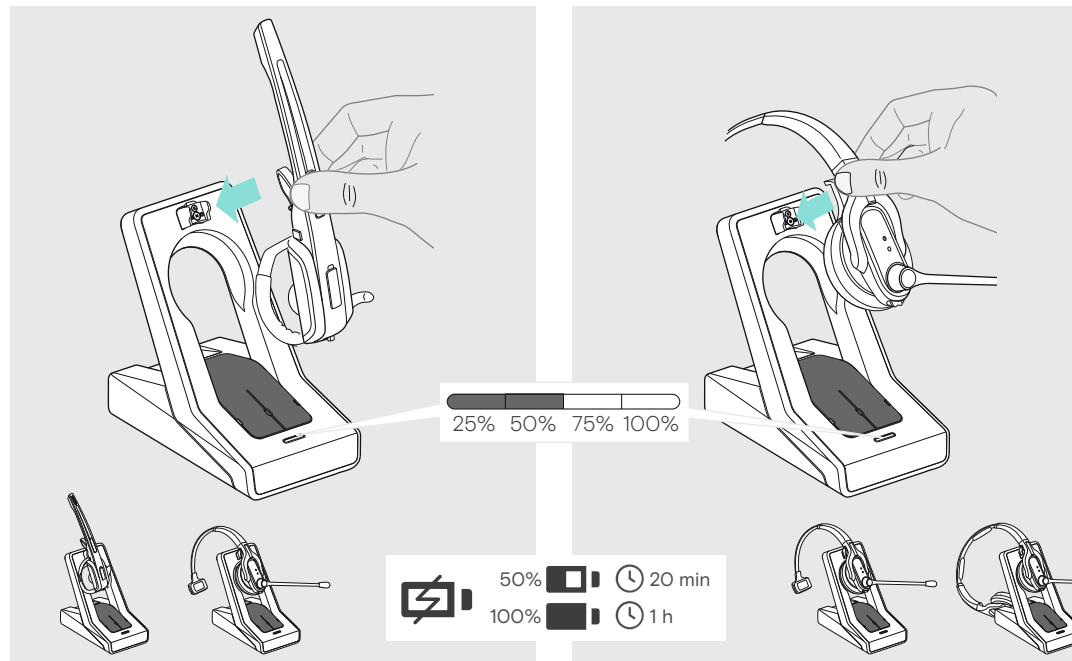
IMPACT SD BS ML - US



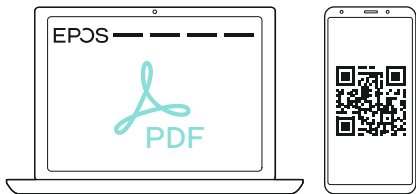
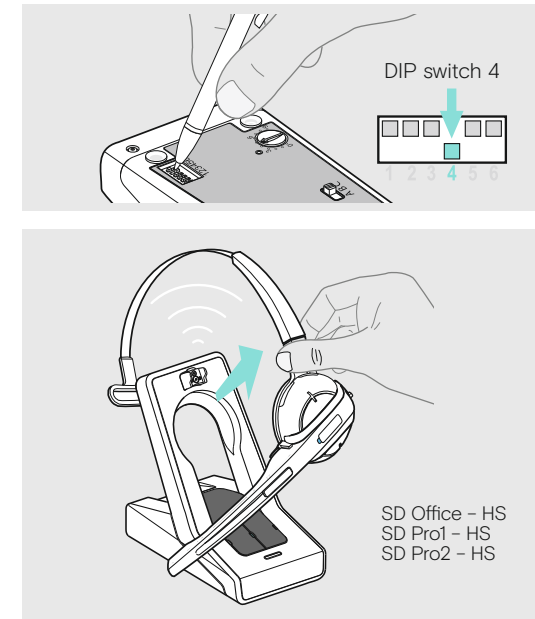
Charging the headset | Charger le micro-casque | Carga del auricular | Carregar o headset

SD Office ML

SD Pro 1 ML/SD Pro 2 ML



Automatic link establishment | Établissement de liaison automatique | Establecimiento de conexión automática | Estabelecimento de ligação automática

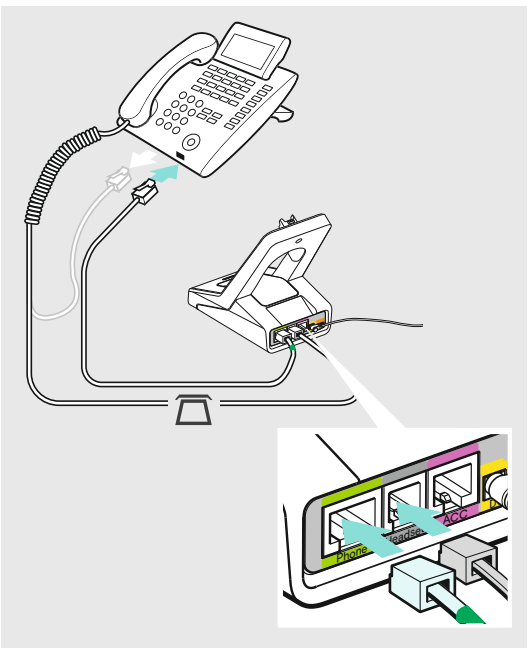


eposaudio.com/support

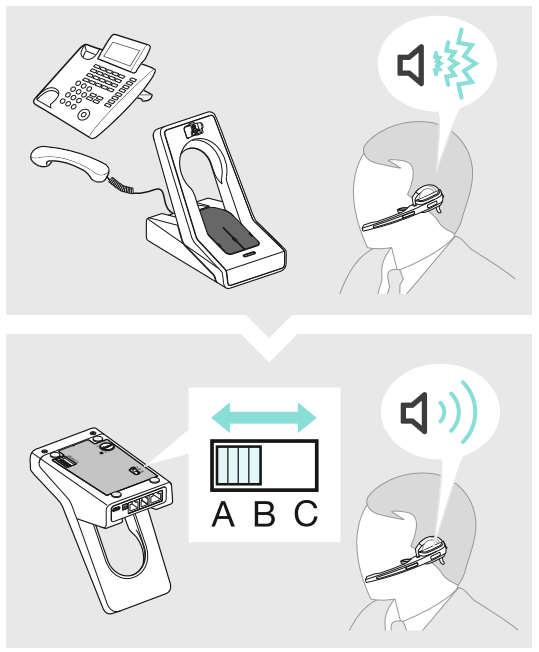
DSEA A/S

Kongebakken 9, DK-2765 Smørum, Denmark
eposaudio.com

Connecting the base station to the fixed line telephone | Raccorder la station de base à un téléphone fixe | Conectar la estación base con el teléfono fijo | Conectar a base ao telefone de mesa



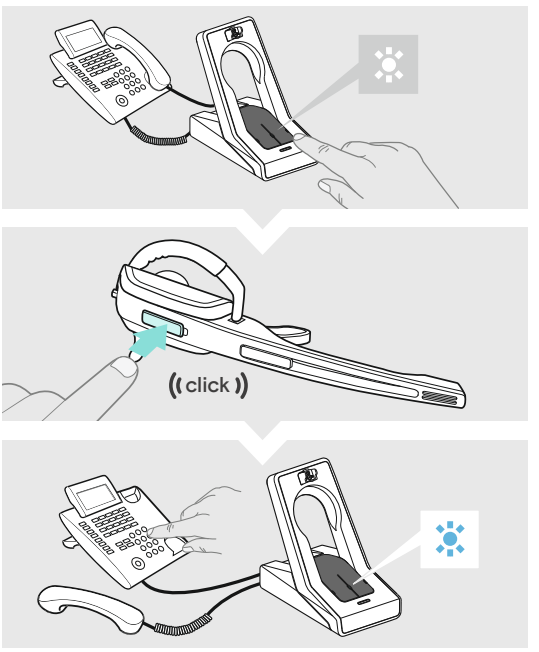
Adjusting the dial tone of the telephone | Régler le signal de tonalité | Ajuste del tono de llamada | Ajustar o som de marcação



Adjusting the microphone sensitivity | Régler la sensibilité du microphone | Ajuste de la sensibilité del micrófono | Ajustar a sensibilidade do microfone



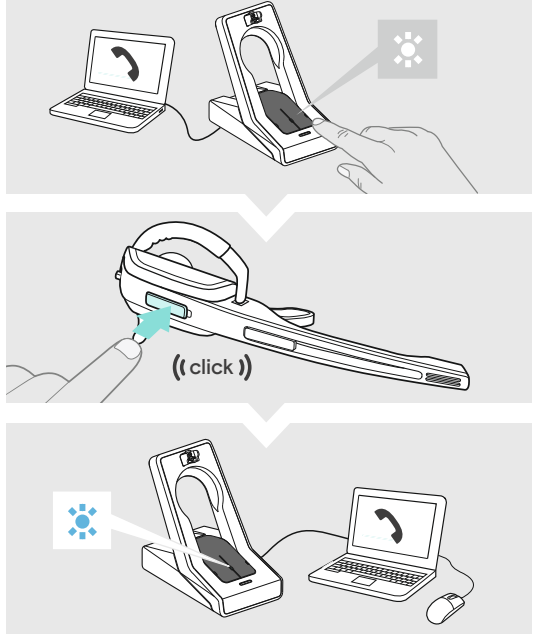
Making calls via the headset | Téléphoner avec le micro-casque | Hacer llamadas con los auriculares | Fazer uma chamada telefonica através do fone de ouvido



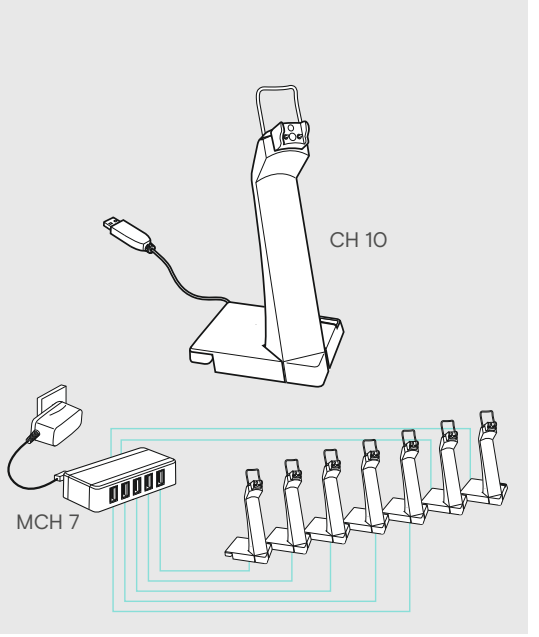
Connecting the base station to a PC | Connecter la station de base à un PC | Conexión de la estación de base a un PC | Ligar a estação de base a um PC



Making calls via the headset | Téléphoner avec le micro-casque | Hacer llamadas con los auriculares | Fazer uma chamada telefonica através do fone de ouvido



Charging several headsets simultaneously | Charger plusieurs micro-casques | Carga de varios auriculares | Carregar vários headsets



Detailed information | Informations détaillées | Información detallada | Informação detalhada

⚙️

For easy setup, configuration and softphone call control settings download EPOS Connect on eposaudio.com/connect

For Compatibility guide go to eposaudio.com/compatibility

For Instruction manual go to eposaudio.com/support